

# Dell EMC Repository Manager Version 3.2

## Troubleshooting Guide



## Notes, cautions, and warnings

 **NOTE:** A NOTE indicates important information that helps you make better use of your product.

 **CAUTION:** A CAUTION indicates either potential damage to hardware or loss of data and tells you how to avoid the problem.

 **WARNING:** A WARNING indicates a potential for property damage, personal injury, or death.

© 2018 - 2019 Dell Inc. or its subsidiaries. All rights reserved. Dell, EMC, and other trademarks are trademarks of Dell Inc. or its subsidiaries. Other trademarks may be trademarks of their respective owners.

<b>1 Overview.....</b>	<b>5</b>
What is new in this release.....	5
Accessing documents from the Dell EMC support site.....	5
Other documents you may need.....	6
DUP Dependencies.....	6
Creating repository.....	7
Creating manual repository.....	8
Creating repository with inventory.....	8
Creating repository with iDRAC and OME integration.....	9
Creating repository with VMware integration.....	10
Creating repository with console integration.....	11
Creating deployment tools.....	12
Creating deployment tool_Smart bootable ISO.....	13
Best practice for creating bootable CD or USB keys for updates.....	13
Creating deployment tool_Smart deployment script.....	15
Creating deployment to shared location.....	15
Configuring settings.....	16
Configuring network settings.....	17
Configuring email configuration.....	17
Creating store settings.....	18
Configuring plugin settings.....	18
Configuring catalog settings.....	19
Comparing repository.....	19
.....	20
<b>A Frequently asked questions.....</b>	<b>21</b>
What to do when DRM is unresponsive?.....	21
Accessing DRM is taking longer time when too many catalogs imported?.....	21
How to delete DRM database?.....	21
Where is the Dell EMC Repository Manager runtime log located?.....	21
Can DRM be run through a Proxy Server?.....	21
How do I edit the '.sh' file in Linux deployment script bundle? Is there any recommended tool to edit this file?.....	22
I am facing access issue in Linux operating system. How do I proceed further?.....	22
I saved a file in the mapped network location. However, I am not able to access location from DRM. What do I do now?.....	22
I am not able to automatically discover the Microsoft Exchange Web Service URL when trying to configure the email notifications. Is there any other option to discover the URL apart from updating it manually?.....	22
I get a message "GLX version 1.2 or higher is required" when I try to open a Linux terminal window. This message is observed in SUSE Linux 11 and 12.....	22
I am not able to create an inventory repository using a specific catalog and inventory file through command line interface. How do I proceed?.....	22
Where can I change the DUP sequence order in DRM 3.x before exporting to a deployment format?.....	23

I am not able to install DRM in a custom location on Linux operating system. How do I proceed with the installation? .....	23
After I delete a bundle, it is not removed from the bundle list on the GUI. Should I delete it elsewhere so that it is updated on the GUI? .....	23
I have installed the latest version of DRM on my system and I am trying to downgrade to one of the previous versions. However, I am not able to proceed further. What do I do now? .....	23
Why import of plugins are failing .....	23
What to do when the browse window is unresponsive in Linux operating system? .....	23

# Overview

The Dell EMC Repository Manager (DRM) ensures that the Dell systems are up-to-date with the latest BIOS, driver, firmware, and software. DRM allows you to:

- Create repositories of customized component(s) and updates.
- Create groups of related updates for systems running the Microsoft Windows and Linux operating system.
- Generate comparison reports. Update baselines of custom repositories and generate deployment tools.

The customized repositories are made up of Dell EMC Update Packages (DUPs) or Non-DUPs (such as .exe, .msi, .bin or any other file formats) files. DUPs are software utilities provided to update specific software and firmware components. You can arrange these components to group the related updates together. Every repository has a **catalog.xml** file and it specifies the content of the repository. DRM also has **catalog.xml.gz** and **catalog.gz** files. You can import the repository content in two formats, however, you can export the repository content in **catalog.xml** format only. The file downloaded from **downloads.dell.com/catalog** is digitally signed to ensure system security.

**NOTE:** In order to provide better security, the **ftp.dell.com** site has been removed, and will be redirected to **http://downloads.dell.com**. However, the most secure option we recommend is to use **https://downloads.dell.com**.

Topics:

- [What is new in this release](#)
- [Accessing documents from the Dell EMC support site](#)
- [Other documents you may need](#)
- [DUP Dependencies](#)
- [Creating repository](#)
- [Creating deployment tools](#)
- [Configuring settings](#)
- [Comparing repository](#)

## What is new in this release

This release of Dell Repository Manager (DRM) supports the following new features:

- Enhanced user experience for OpenManage Enterprise repository creation
- Enhanced user experience for OpenManage Integration for Microsoft System Center repository creation
- Option to replace default script in Smart Bootable ISO.
- Option to replace default script in Smart Deployment Script.
- Automatic Dell EMC System Update through Smart Deployment Script and Smart Bootable ISO.
- Improved UI experience in Compare Window.
- Enhanced usability experience in manual repository creation and manual bundle addition
- Sign verification for all artifacts that are downloaded and used in the application.
- Provides support for only HTTPS protocol.

## Accessing documents from the Dell EMC support site

You can access the required documents using the following links:

- For Dell EMC Enterprise Systems Management documents — [www.dell.com/esmmanuals](http://www.dell.com/esmmanuals)
- For Dell EMC OpenManage documents — [www.dell.com/openmanagemanuals](http://www.dell.com/openmanagemanuals)
- For Dell EMC Remote Enterprise Systems Management documents — [www.dell.com/esmmanuals](http://www.dell.com/esmmanuals)
- For iDRAC and Dell Lifecycle Controller documents — [www.dell.com/idracmanuals](http://www.dell.com/idracmanuals)
- For Dell EMC OpenManage Connections Enterprise Systems Management documents — [www.dell.com/esmmanuals](http://www.dell.com/esmmanuals)
- For Dell EMC Serviceability Tools documents — [www.dell.com/serviceabilitytools](http://www.dell.com/serviceabilitytools)
- a Go to [www.dell.com/support](http://www.dell.com/support).
- b Click **Browse all products**.
- c From **All products** page, click **Software**, and then click the required link from the following:
  - **Analytics**
  - **Client Systems Management**
  - **Enterprise Applications**
  - **Enterprise Systems Management**
  - **Public Sector Solutions**
  - **Utilities**
  - **Mainframe**
  - **Serviceability Tools**
  - **Virtualization Solutions**
  - **Operating Systems**
  - **Support**
- d To view a document, click the required product and then click the required version.
- Using search engines:
  - Type the name and version of the document in the search box.

## Other documents you may need

In addition to this guide, you can access the following guides available at the support site.

- *Dell EMC Repository Manager Quick Installation Guide*
- *Dell EMC System Update User's Guide*
- *Dell EMC Systems Management - OpenManage Software Support Matrix*
- *Dell EMC Update Packages User's Guide*
- *Dell EMC Server Update Utility User's Guide*
- *Dell EMC OpenManage Server Administrator Installation Guide*
- *Dell EMC OpenManage Essentials User's Guide*
- *Dell EMC OpenManage Enterprise User's Guide*
- *Dell EMC OpenManage Integration for VMware vCenter*
- *Dell EMC OpenManage Integration for Microsoft System Center Version 7.1 for System Center Configuration Manager and System Center Virtual Machine Manager*

## DUP Dependencies

This feature articulates the relationship between two different DUPs. SUU enables certain rules and submissions to determine if a set of conditions or requirements are met. These conditions or requirements are called dependencies. Dependency exists when a DUP of a particular kind has a dependency on additional DUP for further execution. This helps the users to determine, which DUP to install first and which one to follow. There are two types of dependencies:

- **Hard Dependency** — Dependency that must be applied in order to be able to apply the update.
- **Soft Dependency** — Dependency that needs to be applied in order to use certain new features coming with the update.

**NOTE:** In certain scenarios, for a complete update or upgrade, you must install two and more DUPs. It is possible that for individual DUPs, you must restart the system, to realize the impact of other installed DUPs.

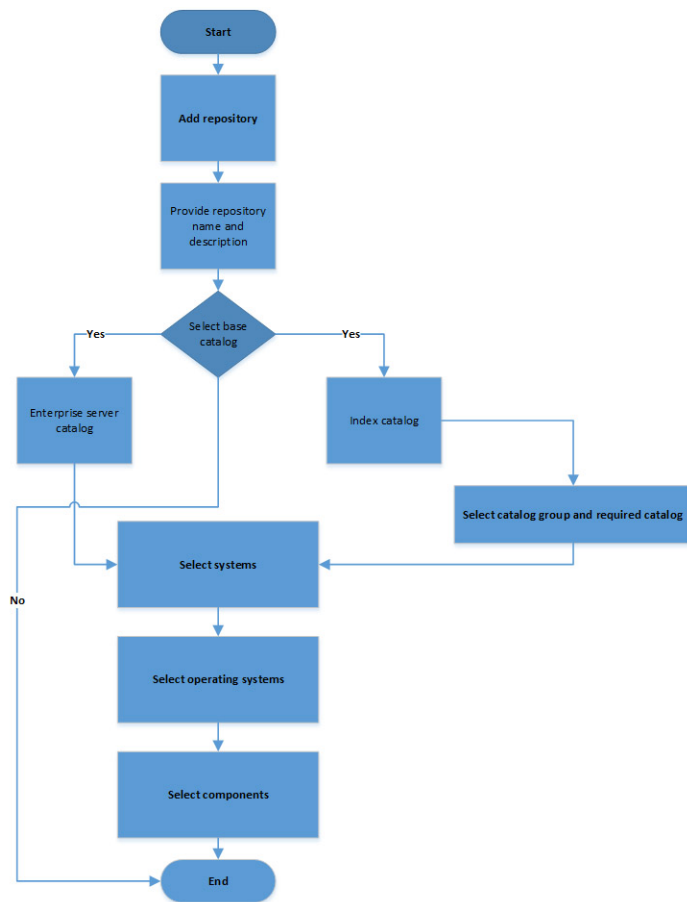
## Creating repository

DRM enables you to create a repository of components that allows you to deploy multiple updates in one instance.

The user scenarios in this chapter describes the process of creating repositories.

## Creating manual repository

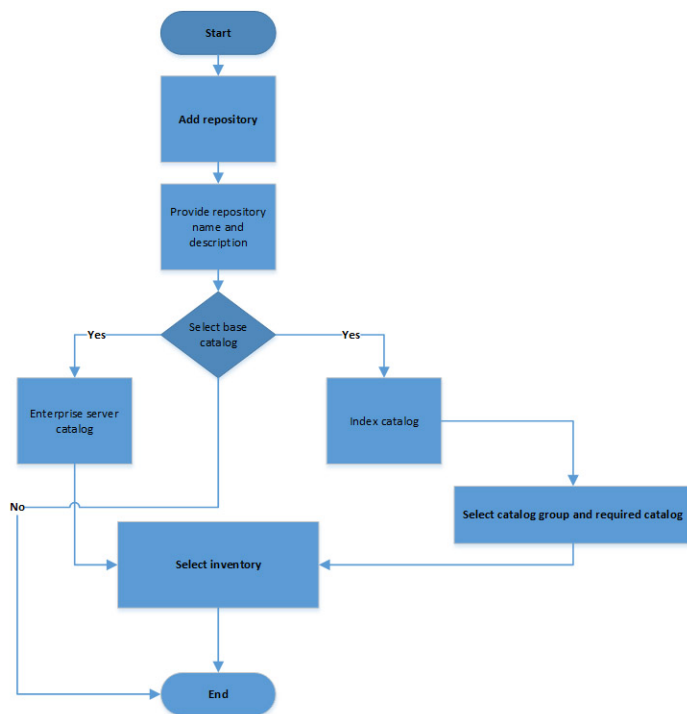
This flowchart describes the process to create a manual repository in DRM.



## Creating repository with inventory

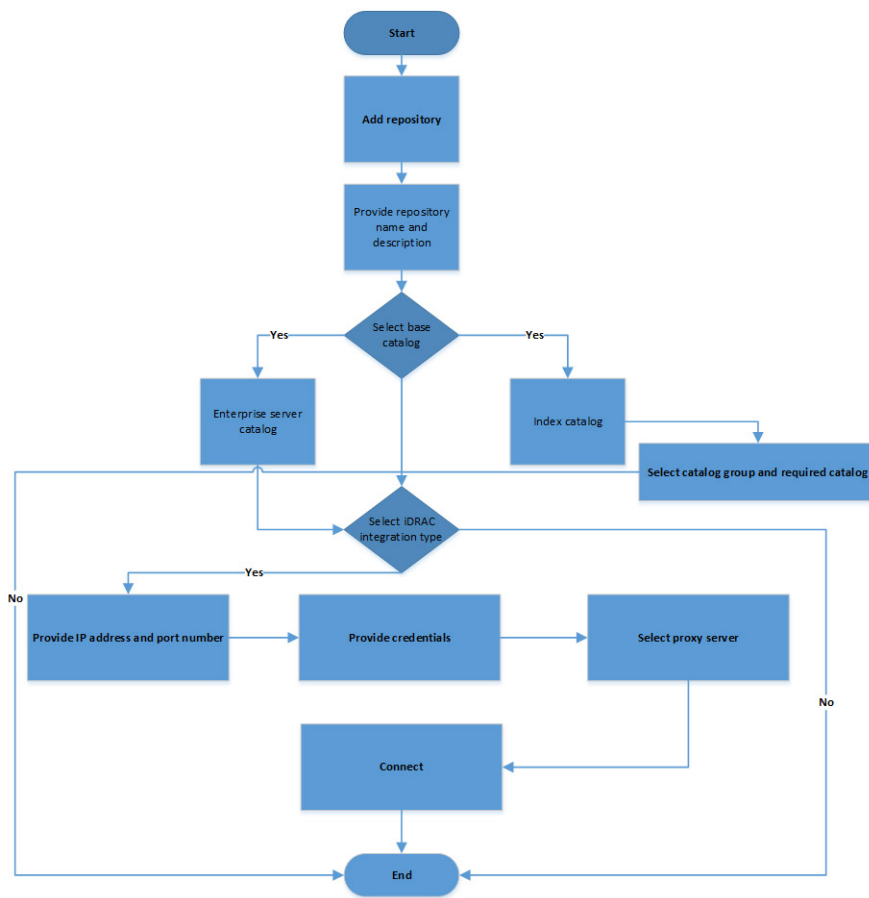
This flowchart describes the process to create a repository with inventory in DRM.





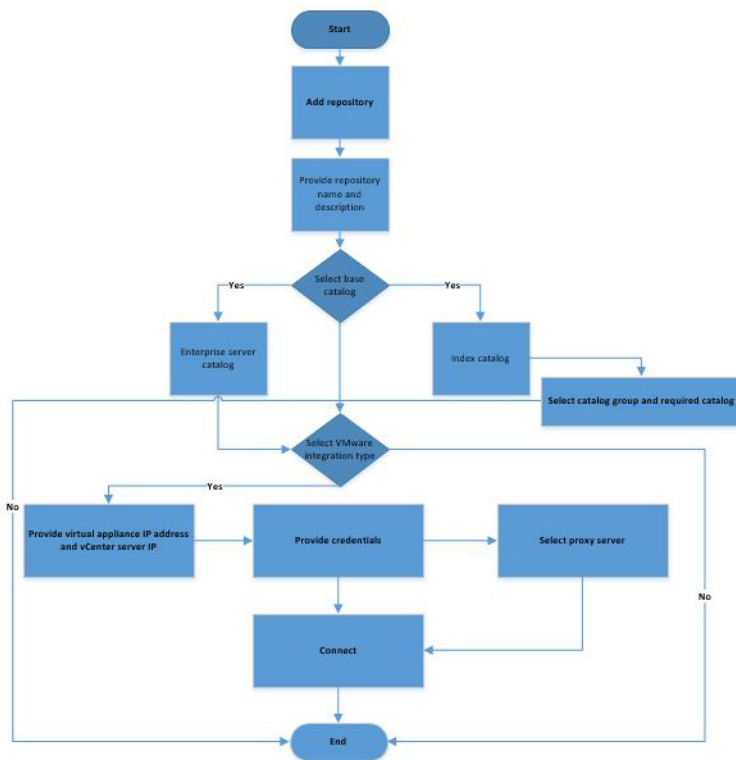
## Creating repository with iDRAC and OME integration

This flowchart describes the process to create a repository with iDRAC and OME integration.



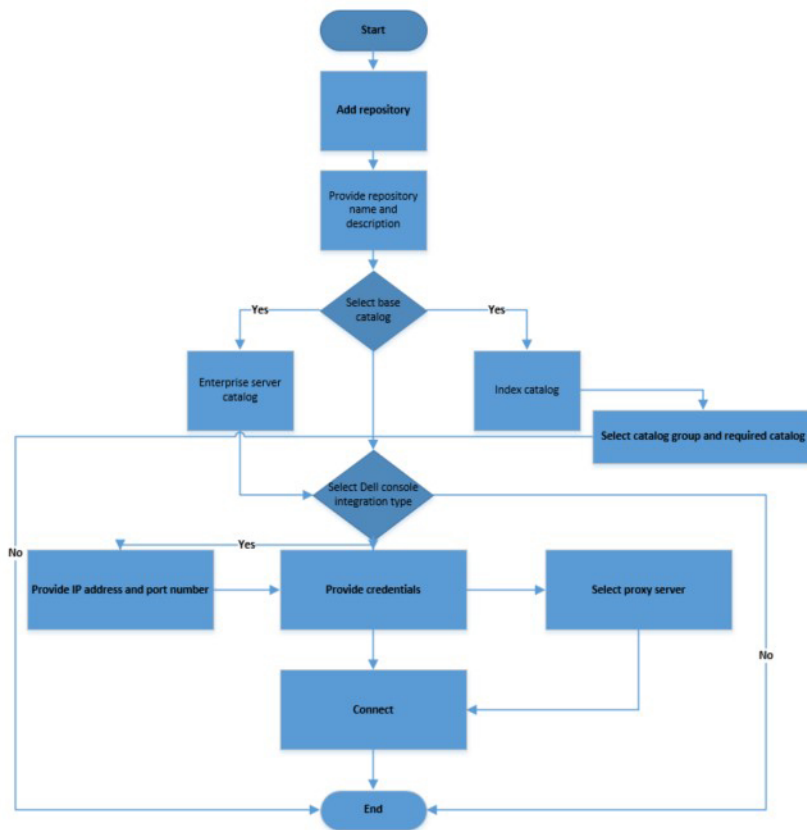
## Creating repository with VMware integration

This flowchart describes the process to create a repository with VMware integration in DRM.



## Creating repository with console integration

This flowchart describes the process to create a repository with console integration in DRM. You can use this method for OpenManage Integration for Microsoft System Center Configuration Manager and Microsoft System Center Virtual Machine Manager (OMIMSSC).

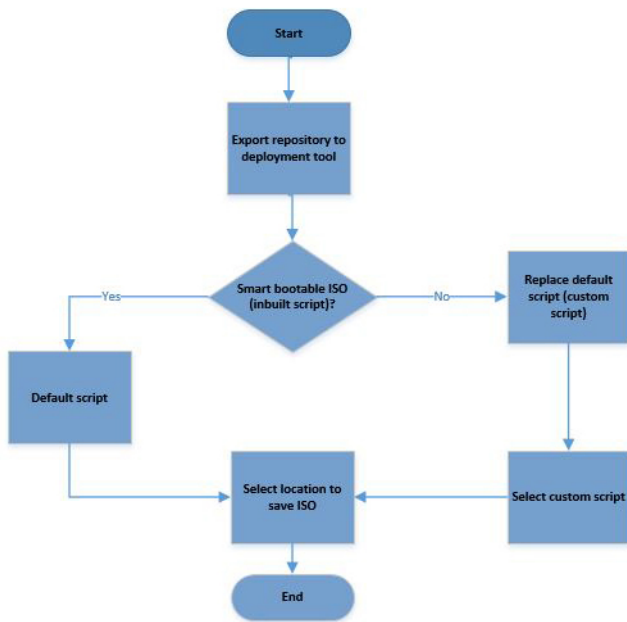


## Creating deployment tools

This chapter describes the process to export the repository as deployment tool type.

# Creating deployment tool\_Smart bootable ISO

This section describes the process to export a repository as Smart Bootable ISO.



## Best practice for creating bootable CD or USB keys for updates

You can create bootable USB keys for updates, using any third party or free tool. You can start your managed system by the bootable CD or USB storage. After the system starts, it automatically runs the selected updates. After the update is complete, you can remove the CD or USB storage, and reboot the system to your host operating system.

**NOTE:** Rufus and UNetBootin are third-party software. Install and use these software at your own risk. Dell EMC shares only the best practices for using Rufus and UNetBootin.

## Creating bootable USB keys using UNetBootin

To create bootable USB keys, using the tool UNetBootin:

- 1 Download the UNetBootin for Windows or Linux available at <https://unetbootin.github.io/>.
- 2 Run the Dell Repository Manager and generate the bootable ISO.
- 3 Start UNetBootin and select the **Diskimage** option.
- 4 Click [...] adjacent to the ISO drop-down menu and navigate to the ISO created by Dell Repository Manager.
- 5 Ensure that the type setting is equal to USB drive and the location where you want to download the USB key displays in the drive drop-down menu.
- 6 Click **OK** to start the USB writing.
- 7 After the USB key writing is complete, insert the USB key into a USB port on the system you want to upgrade.
- 8 Press **<F11>**.

The boot menu is displayed.

- 9 Select option 1 in the UNetBootin boot menu to proceed with the component updates.

To create bootable USB keys, using non-graphical user interface, provide the following command line:

```
>unetbootin method=diskimage isofile="/home/user/LinuxISO.iso" installtype=USB targetdrive=/dev/sdc1
```

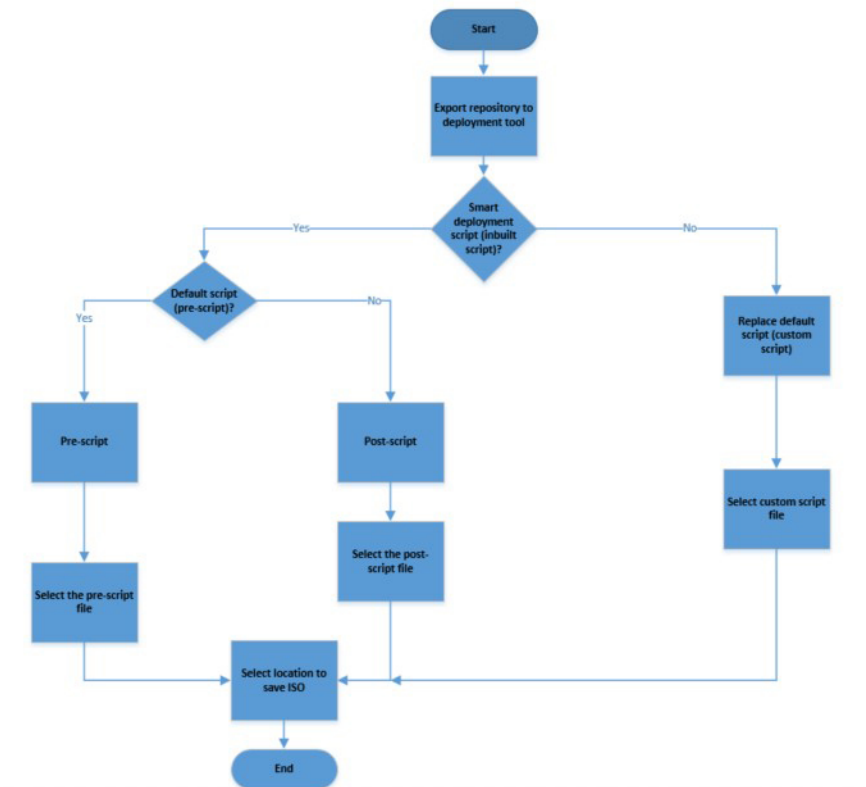
## Creating bootable USB keys using Rufus tool

To create bootable USB keys, using Rufus tool.

- 1 Download the latest version of Rufus for Windows available at [https://rufus.ie/en\\_IE.html](https://rufus.ie/en_IE.html)
- 2 Run the Dell Repository Manager and generate the bootable ISO.
- 3 Start Rufus and select the **Disk or ISO image** option.
- 4 Click **Select adjacent to the Boot Selection** and navigate to the ISO created by Dell Repository Manager.
- 5 Ensure to choose **MBR Partition Type** and BIOS target system with VFAT file system.
- 6 Click **OK** to start the USB writing.
- 7 After the USB key writing is complete, insert the USB key into a USB port on the system you want to upgrade.
- 8 Press <F11>. The boot menu is displayed.
- 9 Select the USB key as the boot target.
- 10 Select option 1 in the Rufus boot menu to proceed with the component updates.

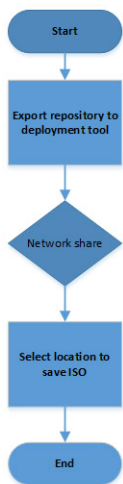
# Creating deployment tool\_Smart deployment script

This section describes the process to export a repository as Smart deployment script.



## Creating deployment to shared location

This section describes the process to export a repository to a common shared location.



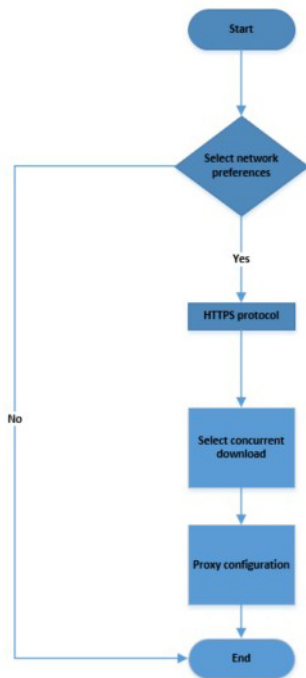
## Configuring settings

This section describes the process to configure the settings or application preferences.



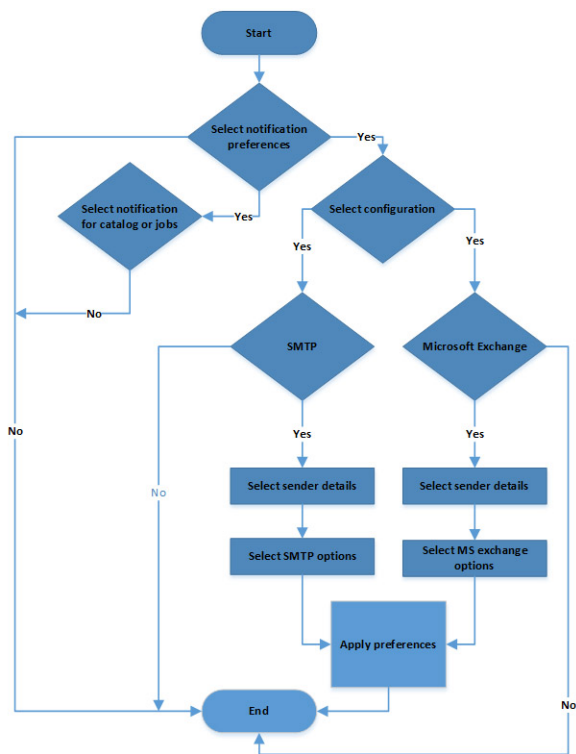
## Configuring network settings

This section describes the process to configure network settings in DRM.



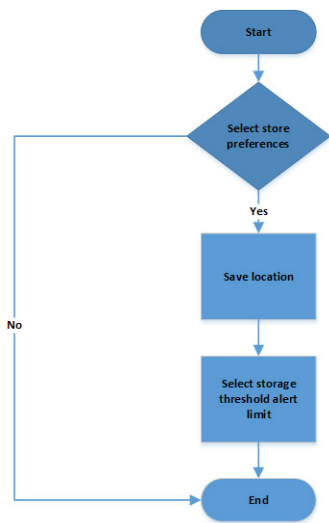
## Configuring email configuration

This section describes the process to configure email settings in DRM.



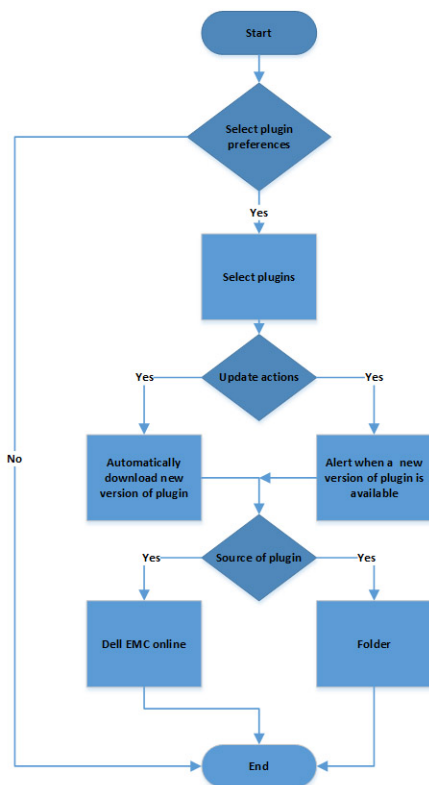
## Creating store settings

This section describes the process to configure data store settings in DRM.



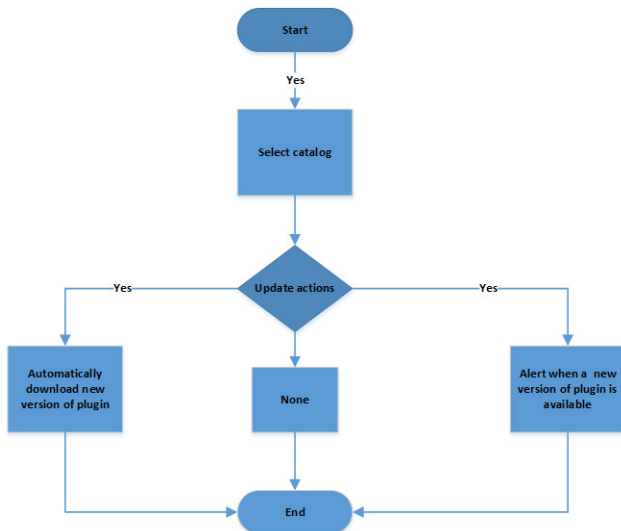
## Configuring plugin settings

This section describes the process to configure plugin settings in DRM.



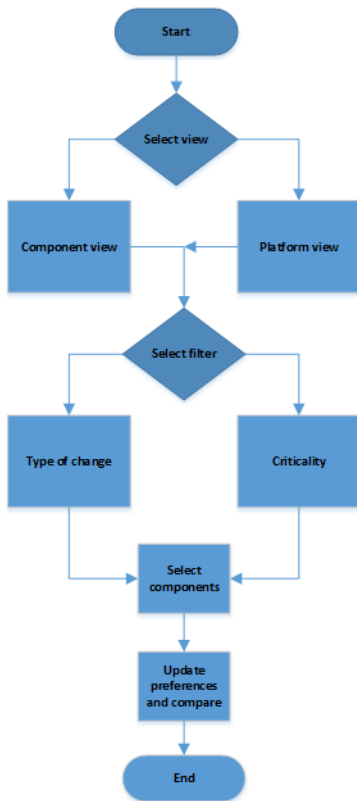
## Configuring catalog settings

This section describes the process to configure catalog settings in DRM.



## Comparing repository

This section describes the process to compare a repository against latest catalog loaded in DRM.



## Frequently asked questions

This section lists some frequently asked questions about DRM.

### What to do when DRM is unresponsive?

When DRM becomes unresponsive, the following error message is displayed: `Lost connection. Waiting for DRM Service to reconnect.` Press `Ctrl+F5` to refresh DRM.

### Accessing DRM is taking longer time when too many catalogs imported?

When there are more catalogs added to a repository, the DRM's performance is impacted.

It is recommended to add a maximum number of 10 catalogs and delete catalogs that are not in use.

### How to delete DRM database?

Stop the DRM services and then delete the following folders:

- For Windows: `C:\ProgramData\Dell\drm\log\drmservice-0.log`
- For Linux: `/var/dell/drm/log/drmservice-0.log`

**NOTE:** If you have administrative privileges, ensure that you unhide all the hidden folders in Microsoft Windows operating system.

### Where is the Dell EMC Repository Manager runtime log located?

DRM creates the log file at runtime in the following location:

- Windows: `C:\ProgramData\Dell\drm\log`
- Linux: `/var/dell/drm/log`

You can also view the logs through **Save and Mail Logs** option in the Dell EMC drop-down menu.

### Can DRM be run through a Proxy Server?

Yes, install DRM inside the firewall and connect to a catalog located outside the firewall ([downloads.dell.com](http://downloads.dell.com) or a local repository) through a proxy server. You can use the proxy server settings of Internet Explorer. If the proxy settings for Internet Explorer are not working, the proxy can be set in DRM. You can then use Dell Repository Manager to customize the catalog as per the requirement and store the customized catalog inside the firewall. For more information on setting proxy, see **Configuring Network Settings**.

**NOTE:** If proxy server credentials are changed, ensure that you change the proxy credentials in DRM as well.

## How do I edit the '.sh' file in Linux deployment script bundle? Is there any recommended tool to edit this file?

Notepad++ editor is recommended for editing the Linux based file extension on a Microsoft Windows operating system. If you want to edit the extension of the file on a Linux operating system, vi editor is recommended.

## I am facing access issue in Linux operating system. How do I proceed further?

Ensure that you have:

- **Read** and **Execution** access
- **Read** and **Write** access to the `drmsuser` in the particular folder including all individual directories where you want to create a repository.

## I saved a file in the mapped network location. However, I am not able to access location from DRM. What do I do now?

Ensure that you have privileges to access the location and then login with the appropriate credentials.

## I am not able to automatically discover the Microsoft Exchange Web Service URL when trying to configure the email notifications. Is there any other option to discover the URL apart from updating it manually?

No. In DRM 3.0, the auto-discovery of Microsoft Exchange Web Server URL is not supported. You have to update the URL manually.

## I get a message “GLX version 1.2 or higher is required” when I try to open a Linux terminal window. This message is observed in SUSE Linux 11 and 12.

This is a warning message and does not affect the functionality of the product.

## I am not able to create an inventory repository using a specific catalog and inventory file through command line interface. How do I proceed?

Ensure that the catalog and inventory are available in the same network location and then create a repository.

## Where can I change the DUP sequence order in DRM 3.x before exporting to a deployment format?

You can no longer customize the sequence to install DUPs. Starting DRM 3.0, the smart deployment feature now runs DSU at install time on a server configuration to determine the proper order to install the DUPs. DRM ensures that iDRAC is the last update to run and the sequence for the rest of the DUPs is taken care of by DSU.

## I am not able to install DRM in a custom location on Linux operating system. How do I proceed with the installation?

On Linux operating system, you cannot install DRM to a custom location through GUI installer mode. By default, the installer location is set to /opt/dell. However, you can use the CLI interactive mode to install DRM on a custom location.

## After I delete a bundle, it is not removed from the bundle list on the GUI. Should I delete it elsewhere so that it is updated on the GUI?

If the size of a bundle or a collection of bundles that are selected to be deleted exceeds 1 GB, several minutes may be required to delete and reflect the progress on the GUI. The workaround is to wait for sometime for the change to be reflected on the GUI or exit from the DRM console and reopen the DRM application.

## I have installed the latest version of DRM on my system and I am trying to downgrade to one of the previous versions. However, I am not able to proceed further. What do I do now?

Reverting to the previous version of DRM is not supported in the current version of the DRM installer. To install an earlier version of DRM, manually uninstall the latest version through Add/Remove Programs in the Microsoft Windows Control Panel and then run the installer of the required version.

 **NOTE:** DRM 2.0 and DRM 3.x.x can co-exist on the same system.

## Why import of plugins are failing

When importing plugins from the exported repository using Smart Deployment Script deployment job, the plugins are not imported because the corresponding sign files are not available.

Manually download the plug-in and sign files from support site and have them in the same location.

## What to do when the browse window is unresponsive in Linux operating system?

If you are using /home/ as your target location for exporting a file in Linux operating system, remove the trailing slash, and then export the file.

If you have already used **/home/** for exporting a file and the browse window becomes unresponsive, delete the directory: **/var/dell/drm/config**, and then continue using DRM.